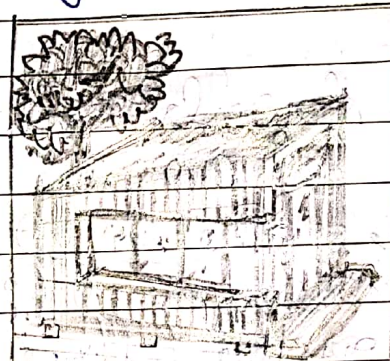


WORKSHEET - 1

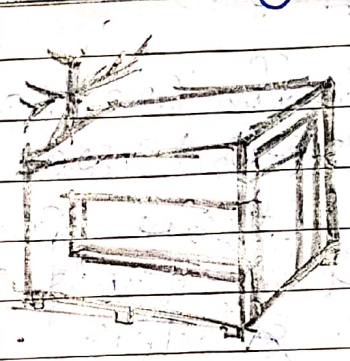
Short notes :

1) Detailed models :

These models are made to describe the details done in the model like interior, exterior or any key feature that is constructed by the model maker in detail and to make it attractive. These models are used to make client and people to show design & structure in detailing.



DETAILED.

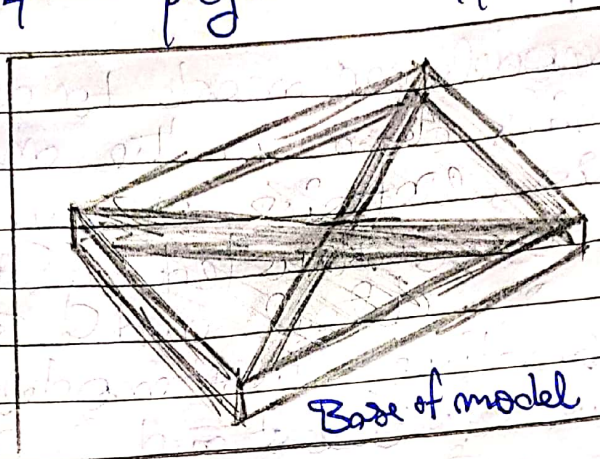


CONCEPT

2) Base of the model :

Base of the model is made from hard and light material because after building the building blocks, landscaping & other design features the base becomes heavy. For making base of model we can use wood, plywood, cardboard, foam board etc.

to support the base of the wood framing is also provided under the base of the model diagonally $\frac{1}{4}$ " plywood supports.



3) Brick Jali :-

Jali walls are type of walls which allow controlled passage of air and light into the interior space. The light through the jalis throw patterns of light & shadow on the floor. The jalis also ensure a constant flow of breeze into the interior allowing the occupant comfort in the hot humid climate!

in model making, the brick jali is made from crosses, wooden pieces, PVC pieces, acrylic sheet, foam board etc.

4) Sites on hills/contours:

Each model depends mostly on the size & scale of the site to create and to show different contours. Cardboards, wooden pieces are used to show variations in land, hills etc. These models are made with thin pieces of model making material and pasted by overlapping or sandwiching.

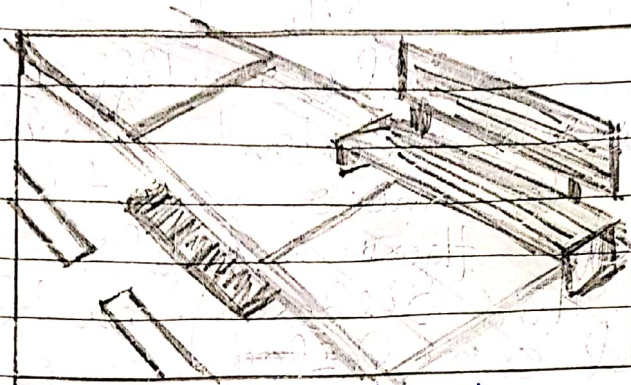


contours

5) Street Furniture:

The objects and equipments installed along streets & roads for various purposes. It includes benches, phone booths, traffic signs etc. The design and placement of furniture takes into account aesthetics of the model & in reality for function & pedestrian mobility and road safety.

In models street furnitures can be made from toothpicks, wood, wire, glue card boards etc



Street furniture.

6) Water bodies :-

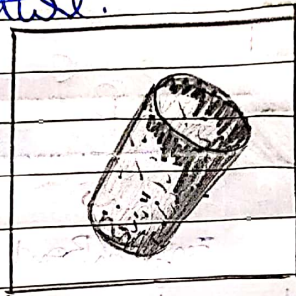
Water bodies can be of any type like rivers, ponds, streams or lakes etc. to give water bodies in a model we use cellophane sheet, blue chart paper, blue colour sheets or polythene etc. to give watery watery look.

7) Various landscape features in a model :-

It incorporates various elements like vegetation, animals, water bodies & other landscaping such as different kinds of structures & settlements, rocks, wind turbines etc. specially contours

8.) Cork :

It is a material; the bark tissue that is harvested for commercial use primarily from *Quercus suber* (oak). This is used in bottles or cap of bottles. Thin sheets are also used in models to show (maderi dom) paint texture.



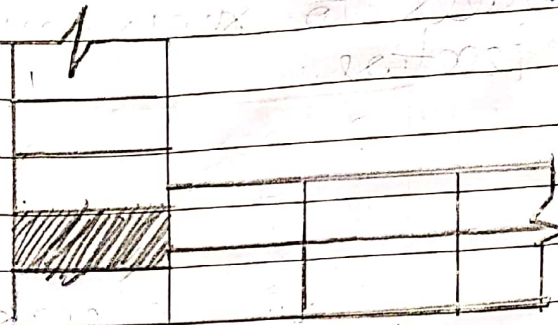
cork
cap

9.) How you will show doors, windows, dowels & sky lights in a model?

→ After making base of the model when we are making building block then we can cut out the doors and windows from it and we can use cellophane sheet or transparent sheet to show sky lights and windows and can make frame of skylight through cardboard.

10) English Bond & Flemish bond:

English bond is considered as the strongest & most widely used brick bond in construction work. It consists of alternate course of headers & stretchers.



English Bond

Flemish bond, each course consists of alternate headers & stretchers. Every header is centrally supported over the stretchers below it. To break the vertical joints in the successive courses queen courses are placed in alternate courses next to the queen header.



Flemish bond